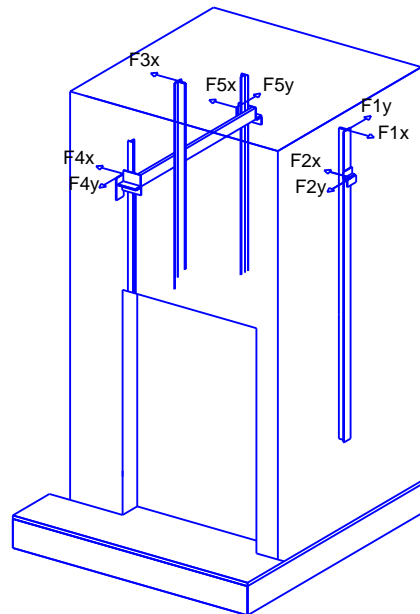


DRAFT DRAWING (NOT DEFINITIVE)

(EN 81-20/50)

MAIN FEATURES	
Nominal load:	1000 kg 13 Passengers
Speed:	1 m/s
Travel:	6 m
N. of stops:	3
N° of acceses:	3
Lighting power:	230 V
Grid voltage:	415 V
N. of phases:	3 PHASES+NEUTRAL
Frequency:	50 Hz
Machine power:	7.3 kW
Heat rejected:	0.7 kW
Power grid supply:	8.8 kW
Nom. Current grid:	13.54 A
Max. Current grid:	15 A
Short circuit rating:	6 KA
Controller type:	COLEC-SELEC SIMPLEX
Deadweight car+frame:	826 kg
Number of ropes:	5
%Counterweighed:	50 %

LOADS IN daN	
P1: 2700 daN	P8: daN
P2: 3700 daN	P9: daN
P3: 1950 daN	P10: daN
P4: 2600 daN	P11: 1950 daN
P5: daN	P12: 100 daN
P6: daN	P13: daN
P7: daN	P14: daN
F1x: 10 daN	F4x: 40 daN
F1y: 450 daN	F4y: 200 daN
F2x: 30 daN	F5x: 40 daN
F2y: 450 daN	F5y: 230 daN
F3x: 420 daN	

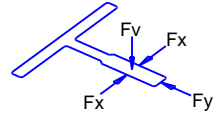


RANGING MEASURES MRL	
X1: 86 mm	Y1: 1386 mm
X2: 281 mm	Y2: 1064 mm
X3: mm	Y3: 1386 mm
X4: mm	Y4: 1064 mm

CUSTOMER	Typical Drawing			REF. 1059024
ADDRESS	Typical Drawing			
CITY	.			
DRAWN	30/07/2020 EXCD00001	SCALE	DRAWING N°	PAGE 1/9
CHECKED		UNIT mm		

DRAFT DRAWING (NOT DEFINITIVE)

	CAR GUIDE	COUNTERWEIGHT GUIDE
Guide type	T-125 L1/A	T-70/A
Clip type	SL3	SL2
Max distance between brackets [mm]	3010	3500
Fx max [daN]	279.41	5.15
Fy max [daN]	93.77	33.24
Fv max [daN]	1905.38	72.17
s perm [N/mm ²]	261.11	208.89
s max [N/mm ²]	237.82	36.65
d perm [mm]	5	10
d guide max X [mm]	5	0.83
d guide max Y [mm]	3.21	2.46
d str max [mm]	0	0



* Information about guides and flanges available on Orona's web 'Documentation per OV'

LANDING DOORS

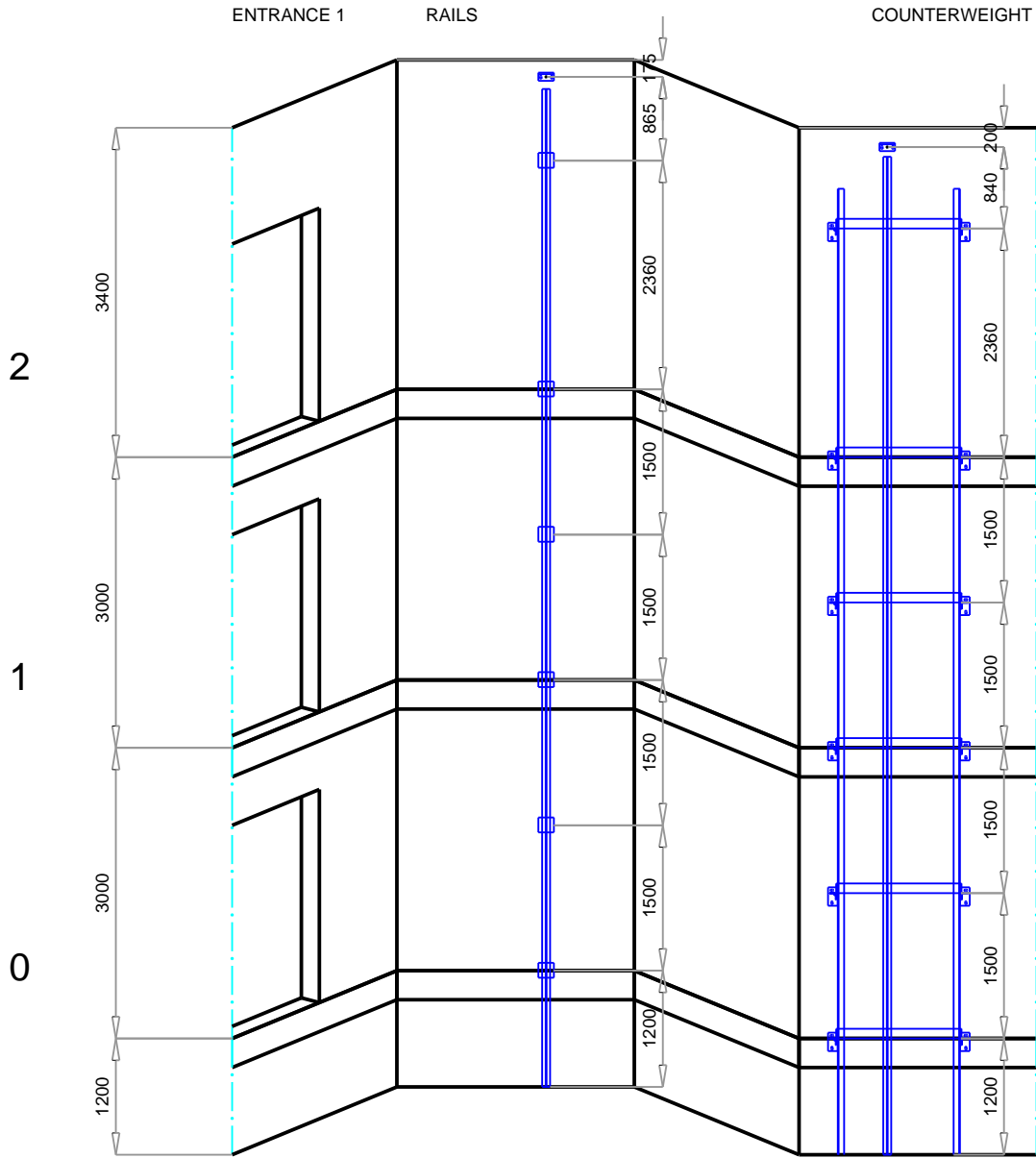
LANDING DOOR FIRE REGULATION	LANDING DOOR MATERIAL	ENTRANCE 1
E120	St.St. Plus	0.1.2

REMARKS

- All the conditions in the document 'Work preparation guide' must be followed
- Optimum assembly process: Orona Platform

CUSTOMER	Typical Drawing			REF. 1059024
ADDRESS	Typical Drawing			
CITY	.			
	DRAWN	30/07/2020 EXCD00001	SCALE	DRAWING N°
	CHECKED		UNIT	PAGE
			mm	2/9

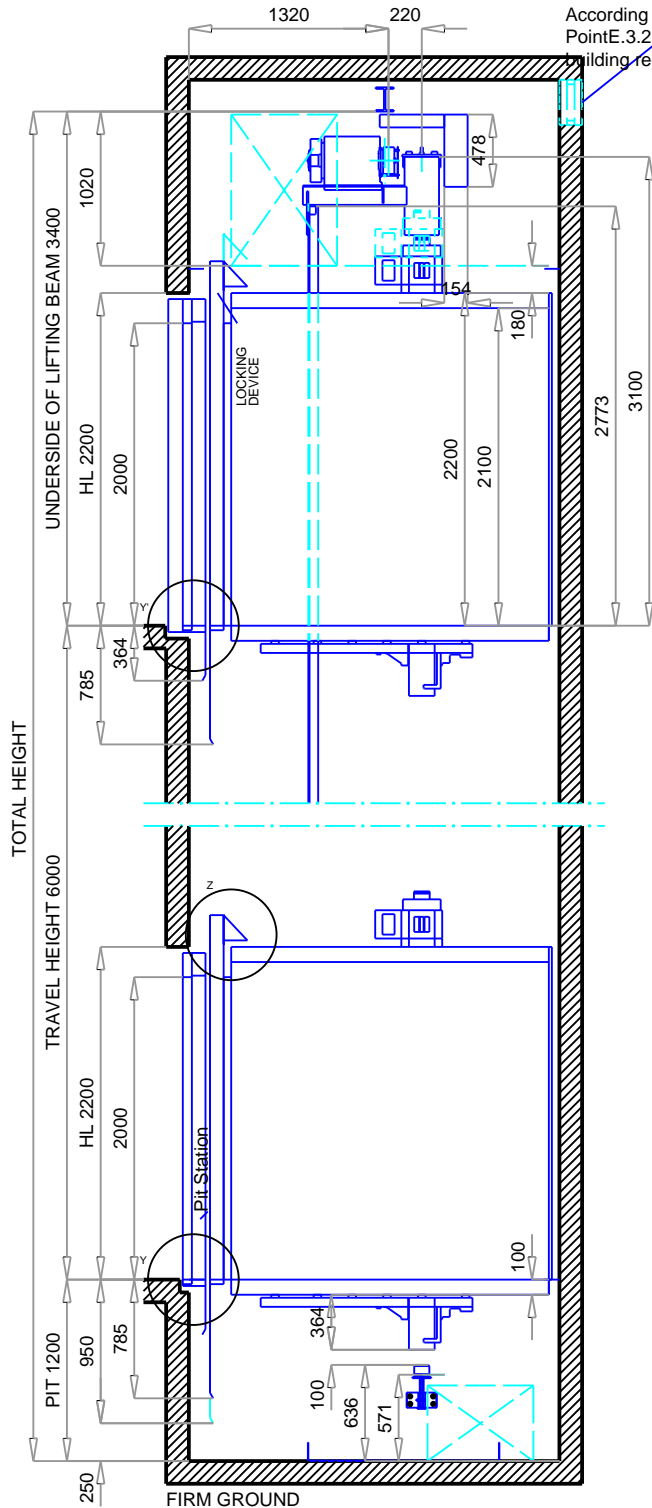
DRAFT DRAWING (NOT DEFINITIVE)



TRAVEL HEIGHT = 6000 mm
 NUMBER OF BRACKETS = 6
 MAX DISTANCE BETWEEN BRACKETS = 2400 mm

CUSTOMER		Typical Drawing		REF. 1059024
ADDRESS		Typical Drawing		
CITY		.		
DRAWN	30/07/2020	SCALE	DRAWING N°	PAGE
	EXCD00001			
CHECKED				3/9

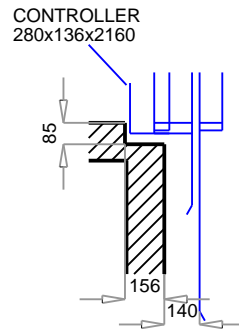
DRAFT DRAWING (NOT DEFINITIVE)



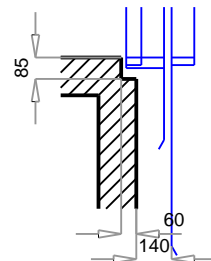
VERTICAL SECTION CAR

DOORS WITH UNLOCKING DEVICE ON LEVELS : 0

Y' DETAIL
Doors on level 2

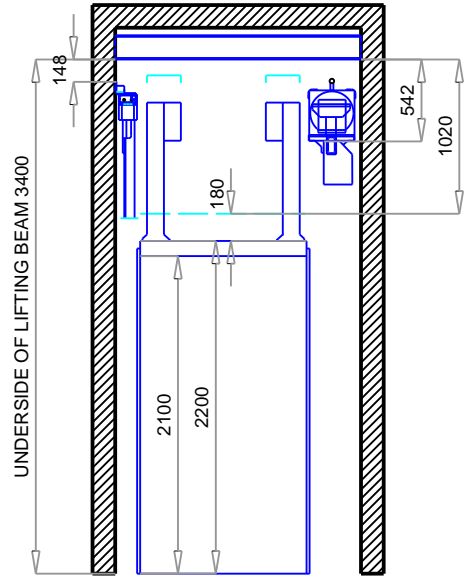
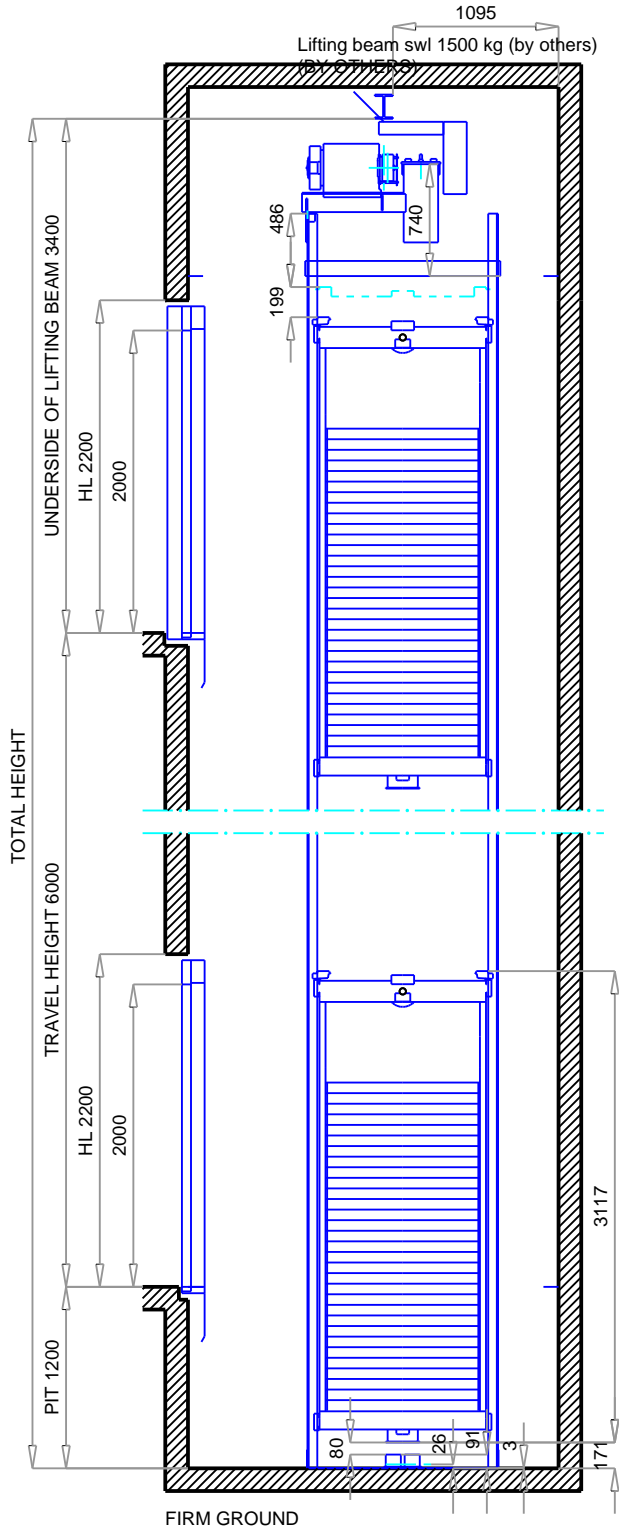


Y DETAIL
Doors on level



CUSTOMER	Typical Drawing			
ADDRESS	Typical Drawing			
CITY	.			
	DRAWN	30/07/2020 EXCD00001	SCALE	DRAWING N°
	CHECKED		UNIT mm	PAGE 4/9
				REF. 1059024

DRAFT DRAWING (NOT DEFINITIVE)



VERTICAL SECTION COUNTERWEIGHT

CUSTOMER Typical Drawing
 ADDRESS Typical Drawing
 CITY .

DRAWN 30/07/2020
 EXCD00001

SCALE

DRAWING N°

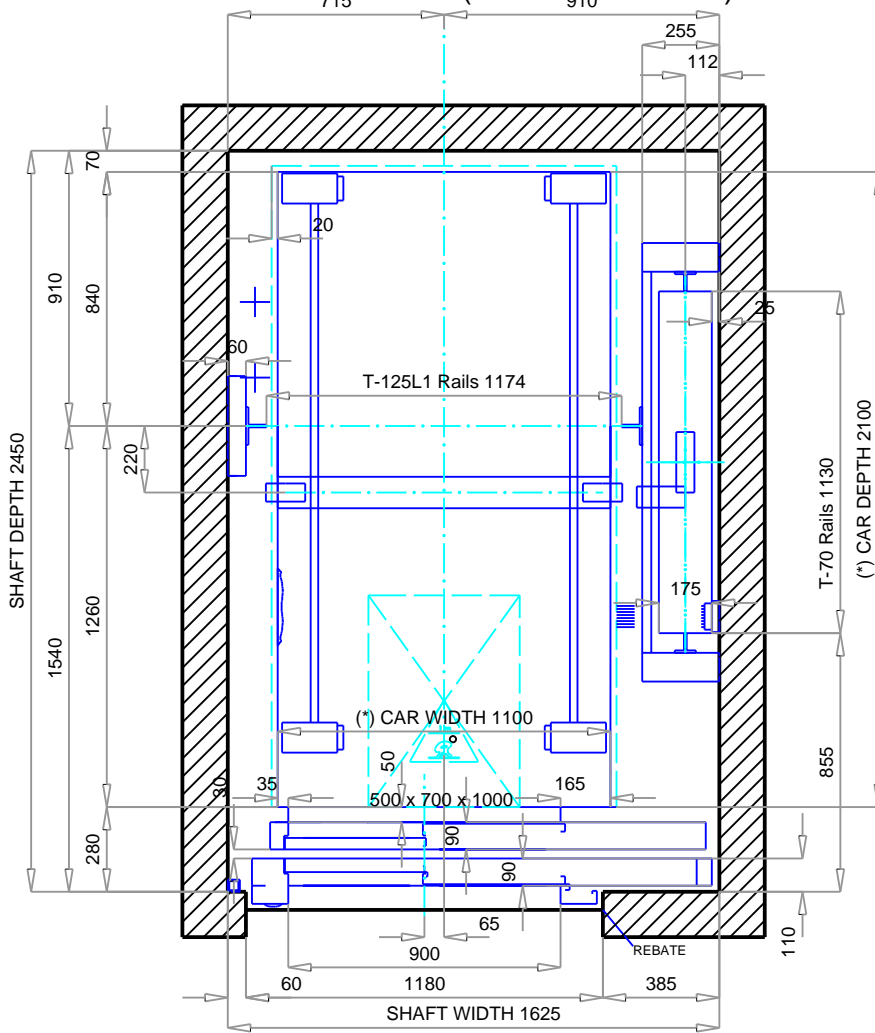
CHECKED

UNIT mm

PAGE 5/9

REF. 1059024

DRAFT DRAWING (NOT DEFINITIVE)



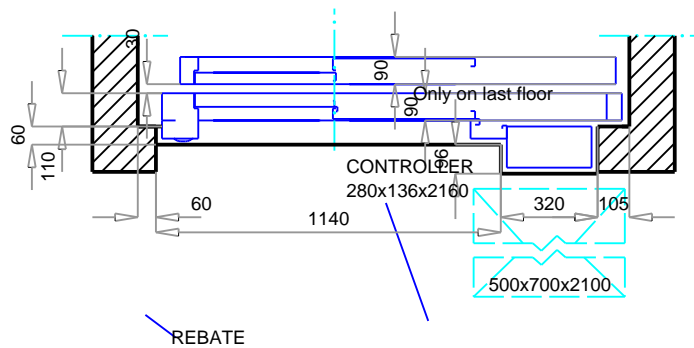
SHAFT PLAN

Scale 1:2 level

Headroom requirement for a solution compliant with EN81-20/50 with:

Max Shaft Depth = 2784 mm

Doors on level 2



(*) Car dimensions according to EN81-70

CUSTOMER Typical Drawing
 ADDRESS Typical Drawing
 CITY .

DRAWN 30/07/2020
 EXCD00001

SCALE

DRAWING N°

CHECKED

UNIT mm

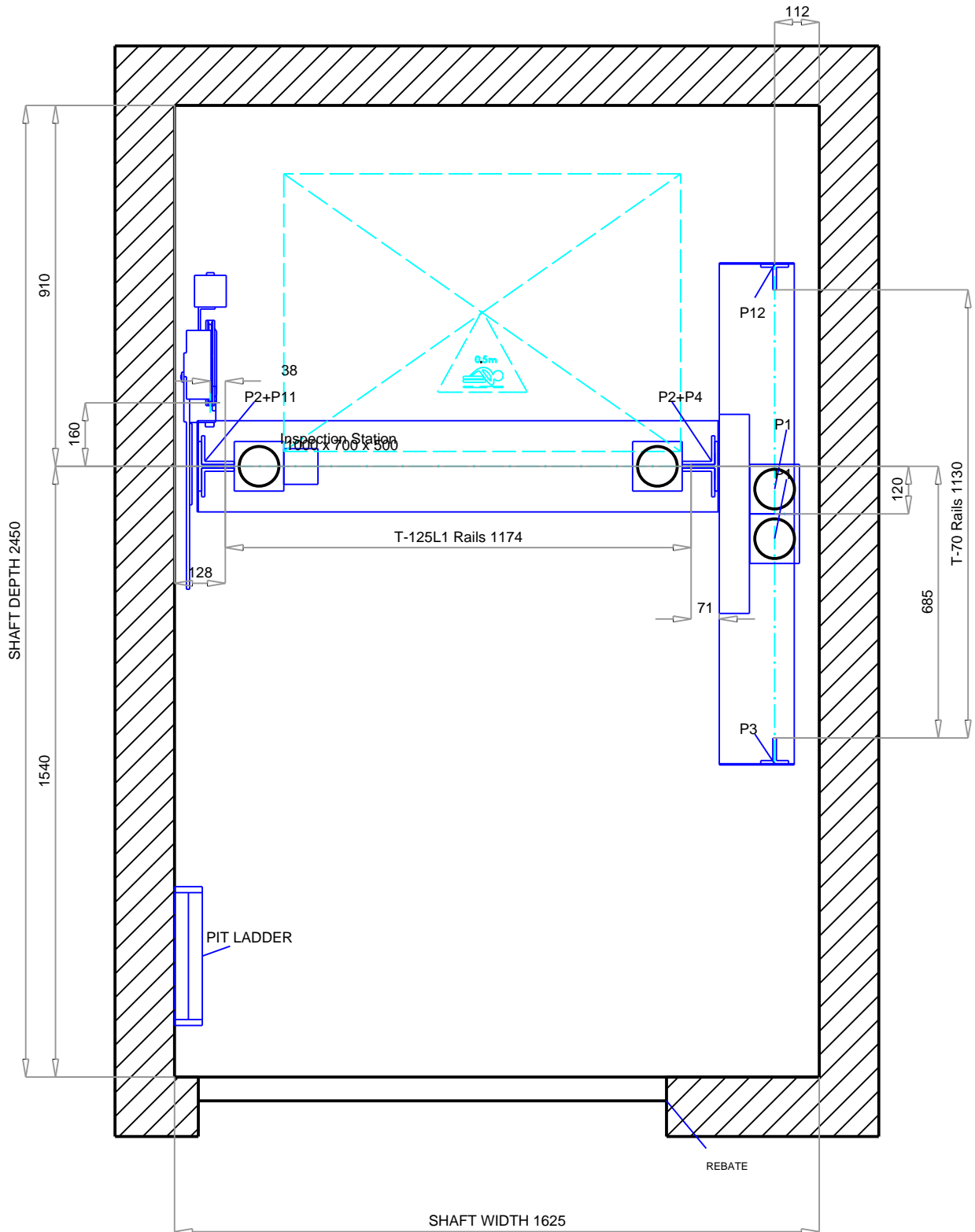
PAGE

6/9

REF.

1059024

DRAFT DRAWING (NOT DEFINITIVE)

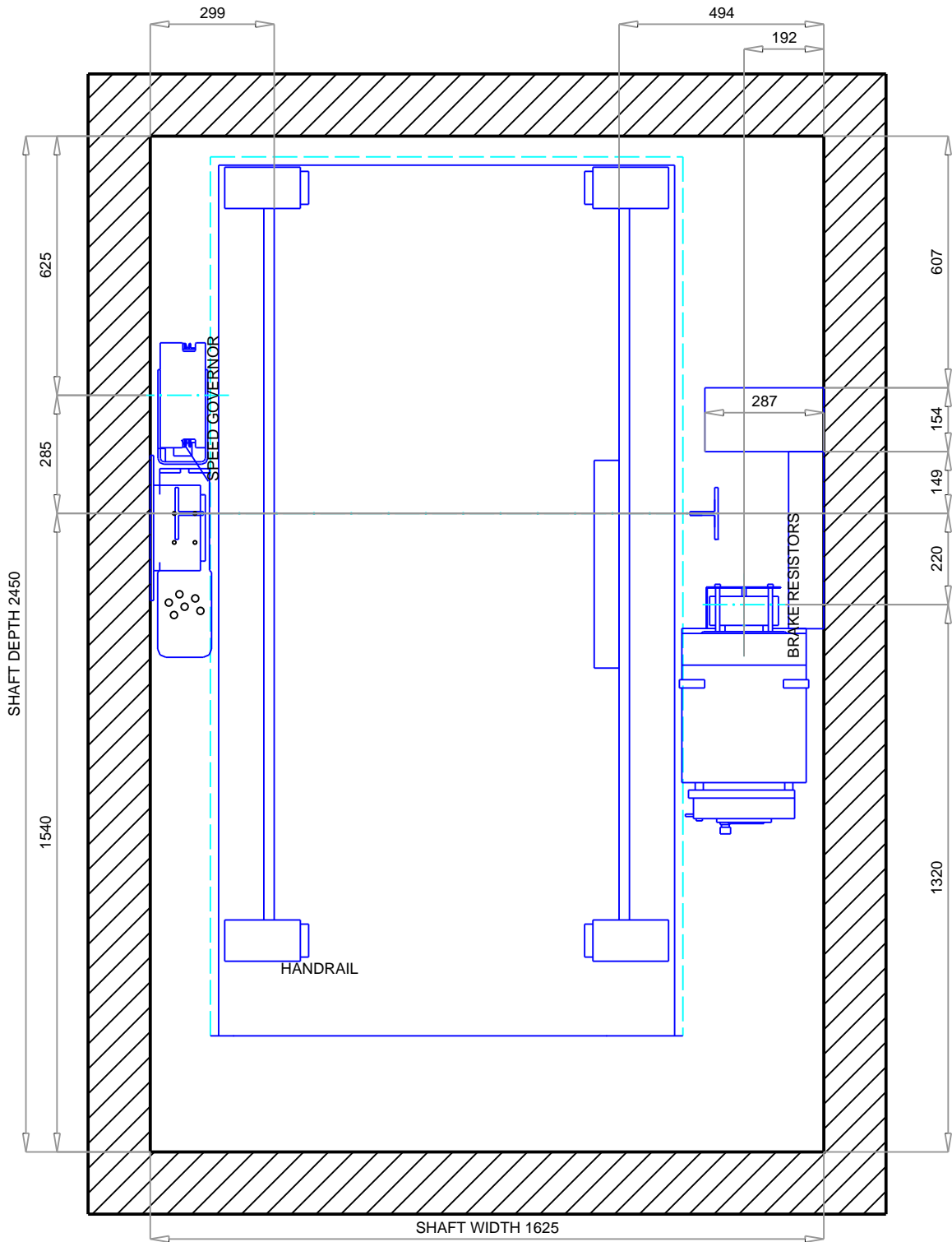


PLAN ON PIT

Scale 1:15

CUSTOMER	Typical Drawing			REF. 1059024
ADDRESS	Typical Drawing			
CITY	.			
DRAWN	30/07/2020 EXCD00001	SCALE	DRAWING N°	PAGE 7/9
CHECKED		UNIT mm		

DRAFT DRAWING (NOT DEFINITIVE)



MACHINE VIEW

Scale 1:15

CUSTOMER Typical Drawing
 ADDRESS Typical Drawing
 CITY .

DRAWN 30/07/2020
 EXCD00001

SCALE

DRAWING N°

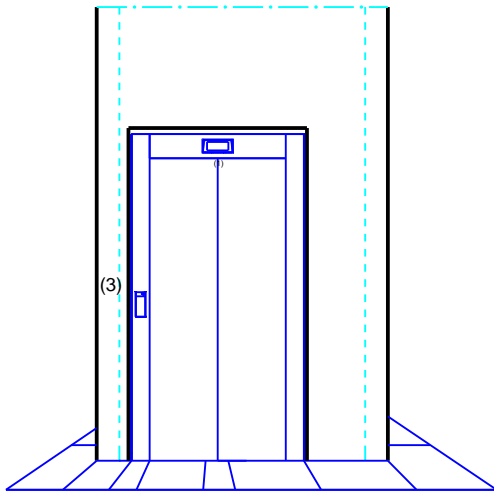
CHECKED

UNIT mm

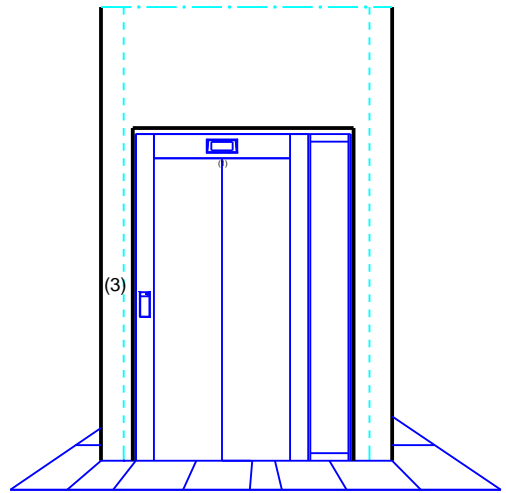
PAGE 8/9

REF. 1059024

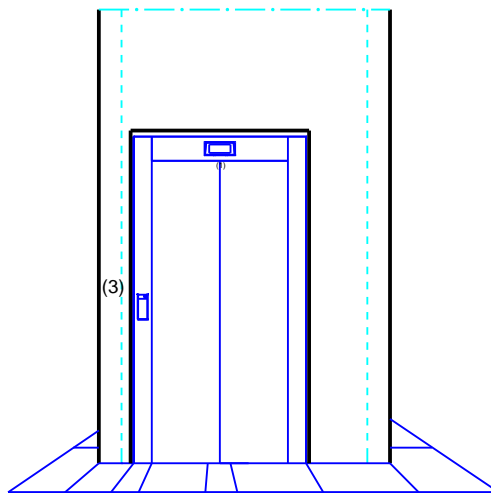
DRAFT DRAWING (NOT DEFINITIVE)



Doors on level 1



Doors on level 2



Doors on level 0

(1) Indicator

(3) LOP

CUSTOMER		Typical Drawing		REF. 1059024
ADDRESS		Typical Drawing		
CITY		.		
	DRAWN	30/07/2020 EXCD00001	SCALE	DRAWING N°
	CHECKED		UNIT mm	PAGE 9/9