

DRAFT DRAWING (NOT DEFINITIVE)

(EN 81-20/50)

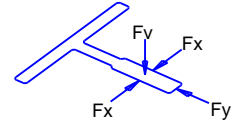
MAIN FEATURES	
Nominal load:	1600 kg 21 Passengers
Speed:	1 m/s
Travel:	6 m
N. of stops:	3
Nº of acceses:	3
Lighting power:	230 V
Grid voltage:	415 V
N. of phases:	3 PHASES+NEUTRAL
Frequency:	50 Hz
Machine power:	11.7 kW
Heat rejected:	1.2 kW
Power grid supply:	14 kW
Nom. Current grid:	21.63 A
Max. Current grid:	24.26 A
Short circuit rating:	6 KA
Controller type:	COLEC-SELEC SIMPLEX
Deadweight car+frame:	1364 kg
Number of ropes:	7
%Counterweighed:	50 %

LOADS IN DaN	
P1: 8700 daN	P8: 800 daN
P2: 5950 daN	P9: daN
P3: 150 daN	P10: daN
P4: 3200 daN	P11: daN
P5: 4150 daN	P12: daN
P6: 1350 daN	P13: daN
P7: 2750 daN	P14: daN

CUSTOMER Typical Drawing				REF. 1059024
ADDRESS Typical Drawing				
CITY .				
	DRAWN	30/07/2020 EXCD00001	SCALE	DRAWING Nº
	CHECKED		UNIT mm	PAGE 1/9

DRAFT DRAWING (NOT DEFINITIVE)

	CAR GUIDE	COUNTERWEIGHT GUIDE
Guide type	T-125/B	T-90/A
Clip type	SL4	SL4
Max distance between brackets [mm]	3500	3500
Fx max [daN]	244	10.39
Fy max [daN]	189.26	60
Fv max [daN]	3086.54	130.16
s perm [N/mm ²]	227.78	186.67
s max [N/mm ²]	113.62	25.5
d perm [mm]	5	10
d guide max X [mm]	4.66	0.6
d guide max Y [mm]	3.8	1.79
d str max [mm]	0	0



* Information about guides and flanges available on Orona's web 'Documentation per OV'

LANDING DOORS

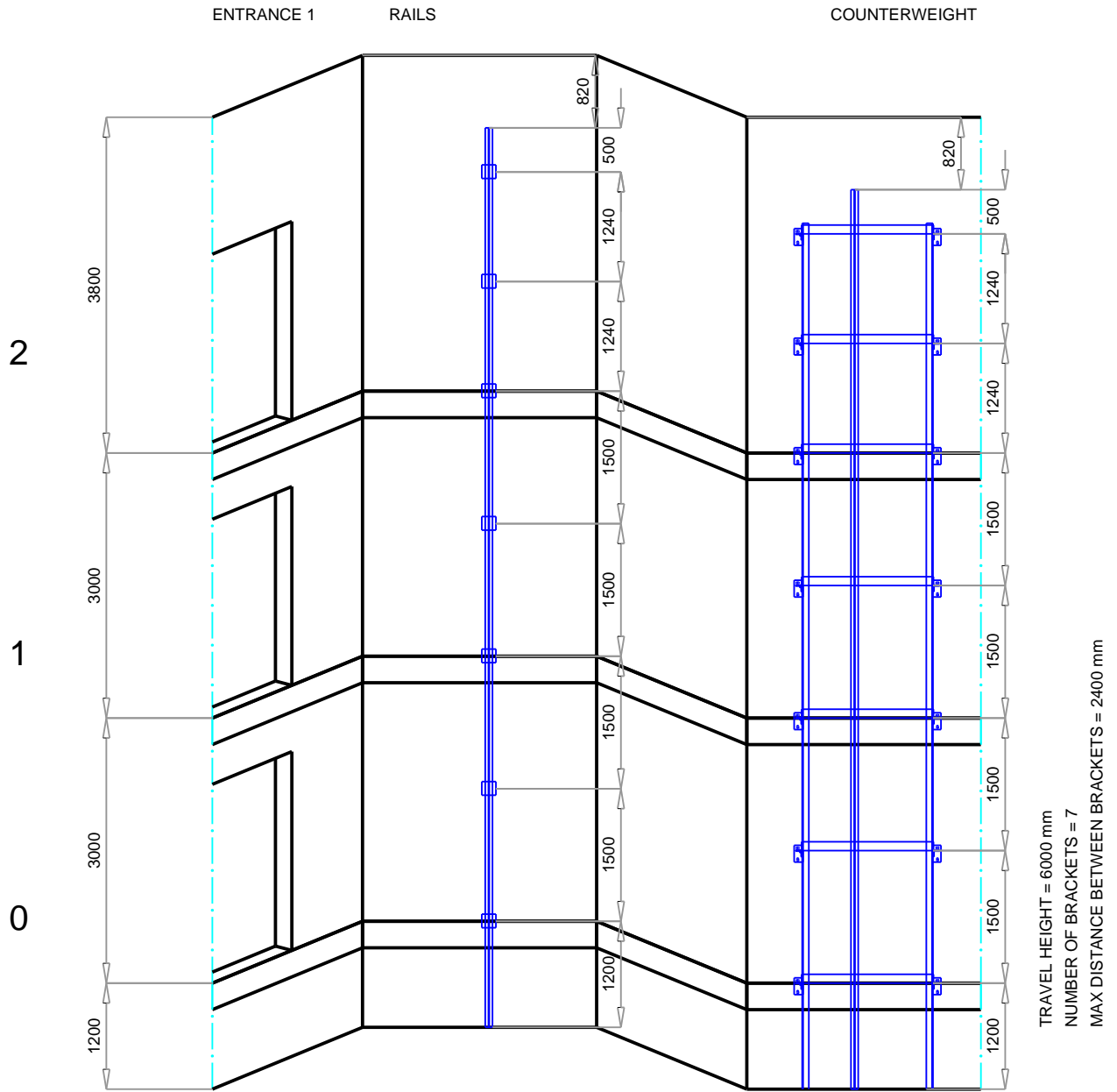
LANDING DOOR FIRE REGULATION	LANDING DOOR MATERIAL	ENTRANCE 1
E120	St.St. Plus	0,1,2

REMARKS

- All the conditions in the document 'Work preparation guide' must be followed
- Optimum assembly process: MTH (Supported platform)
- During lift loading and unloading, the total weight of the carried items plus the loading trolley must not exceed the nominal load of the lift at any time

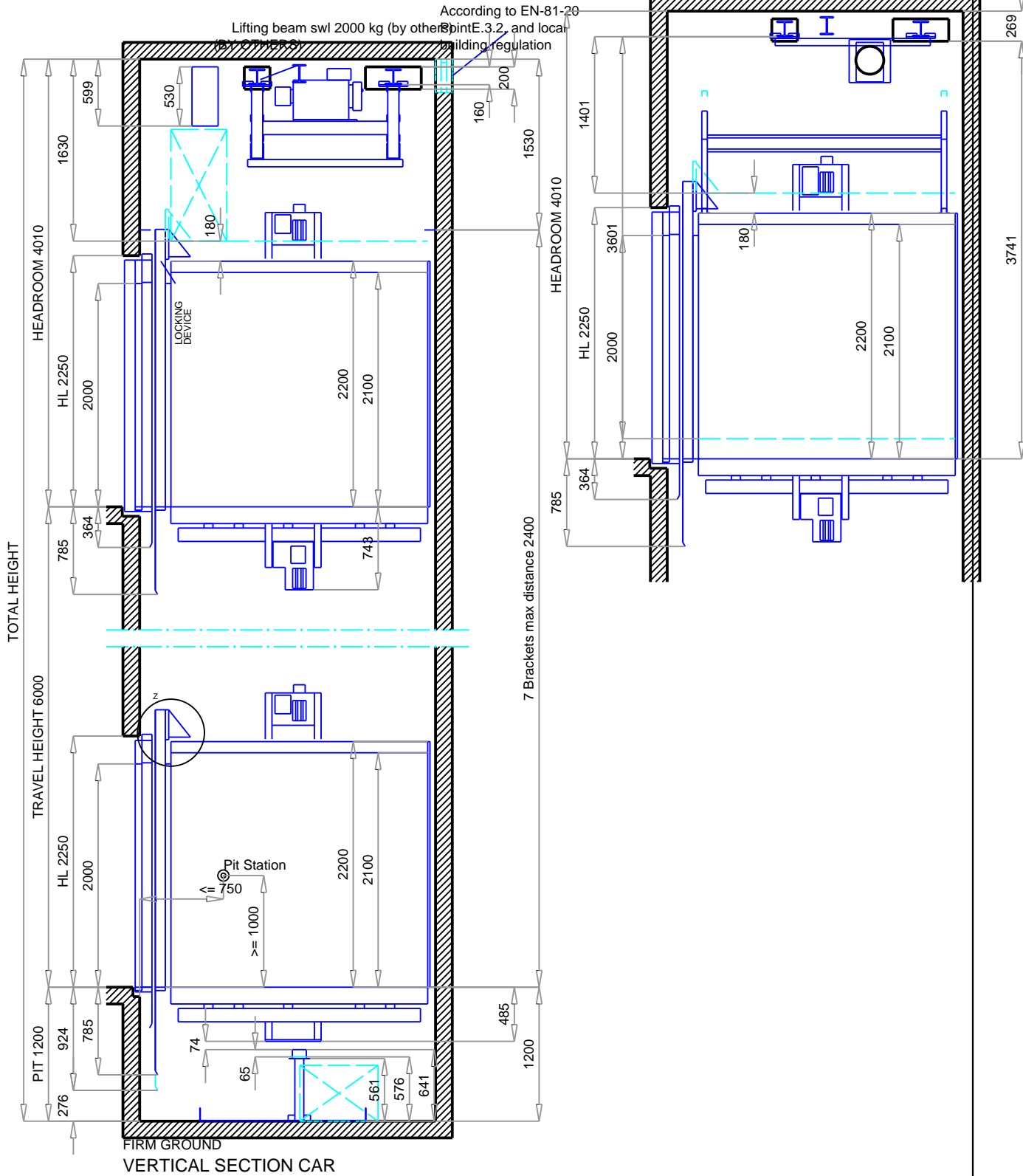
CUSTOMER	Typical Drawing			REF. 1059024
ADDRESS	Typical Drawing			
CITY	.			
	DRAWN	30/07/2020 EXCD00001	SCALE	DRAWING N°
	CHECKED		UNIT mm	PAGE 2/9

DRAFT DRAWING (NOT DEFINITIVE)



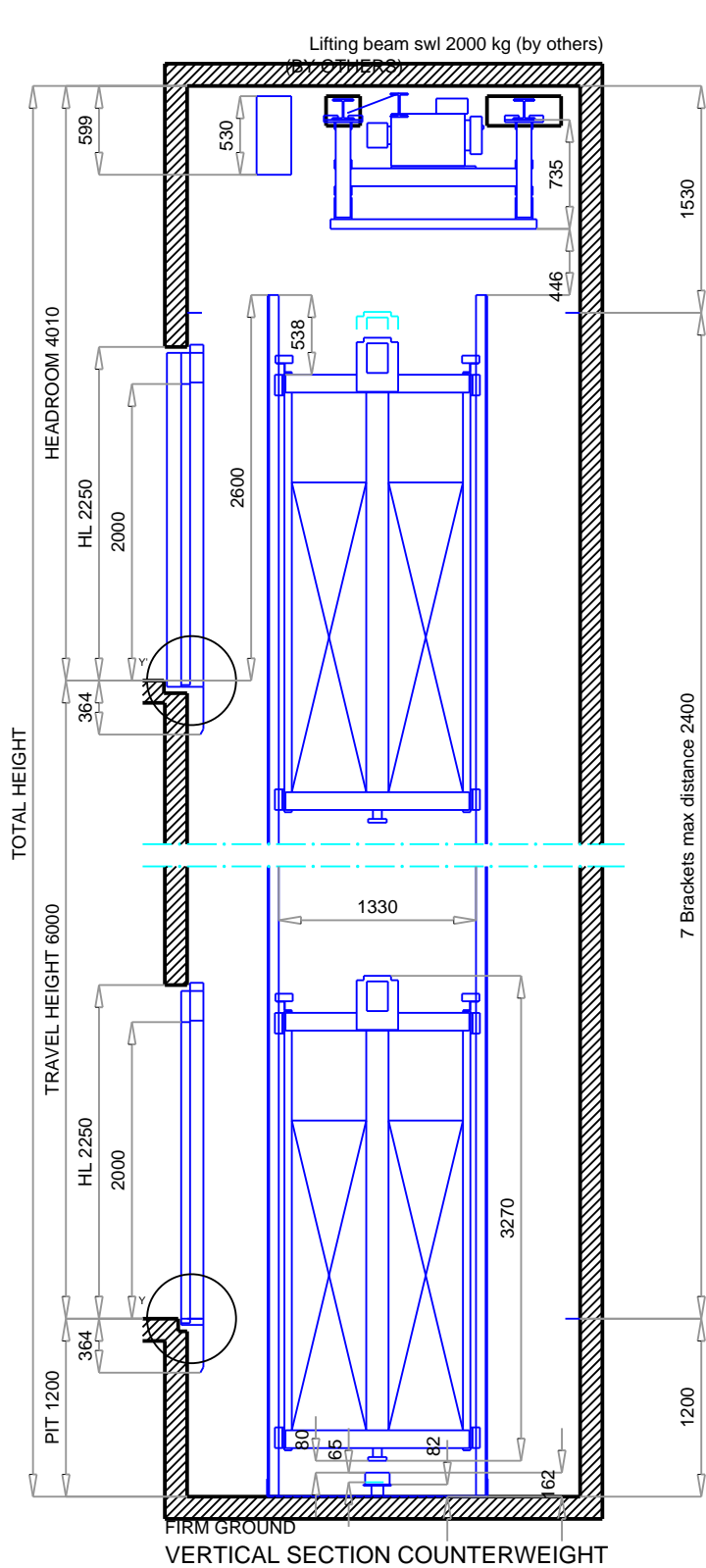
CUSTOMER		Typical Drawing		REF. 1059024
ADDRESS		Typical Drawing		
CITY		.		
DRAWN	30/07/2020	SCALE	DRAWING N°	PAGE 3/9
	EXCD00001	UNIT mm		
CHECKED				

DRAFT DRAWING (NOT DEFINITIVE)

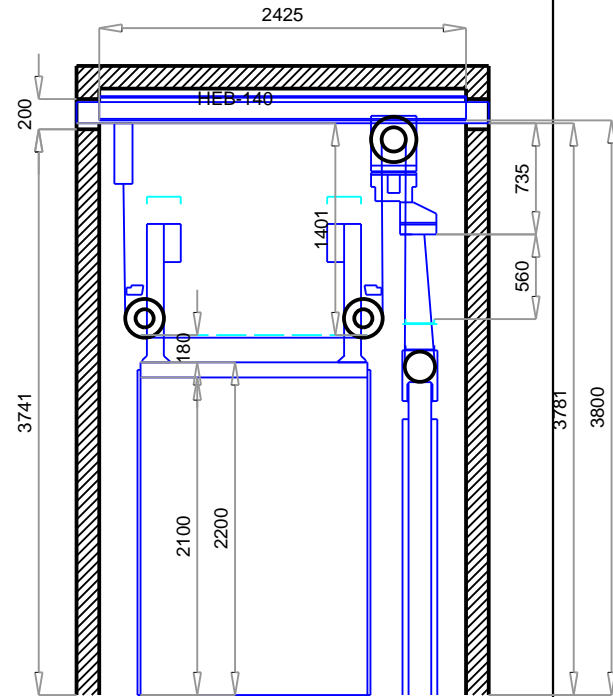


CUSTOMER	Typical Drawing			REF. 1059024
ADDRESS	Typical Drawing			
CITY	.			
	DRAWN	30/07/2020 EXCD00001	SCALE	DRAWING N°
	CHECKED		UNIT mm	PAGE 4/9

DRAFT DRAWING (NOT DEFINITIVE)

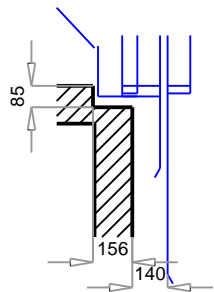


7 Brackets max distance 2400

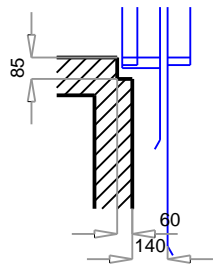


Y' DETAIL
Doors on level 2

CONTROLLER



Y DETAIL
Doors on level



CUSTOMER Typical Drawing
ADDRESS Typical Drawing
CITY .

DRAWN 30/07/2020
EXCD00001

SCALE

DRAWING N°

CHECKED

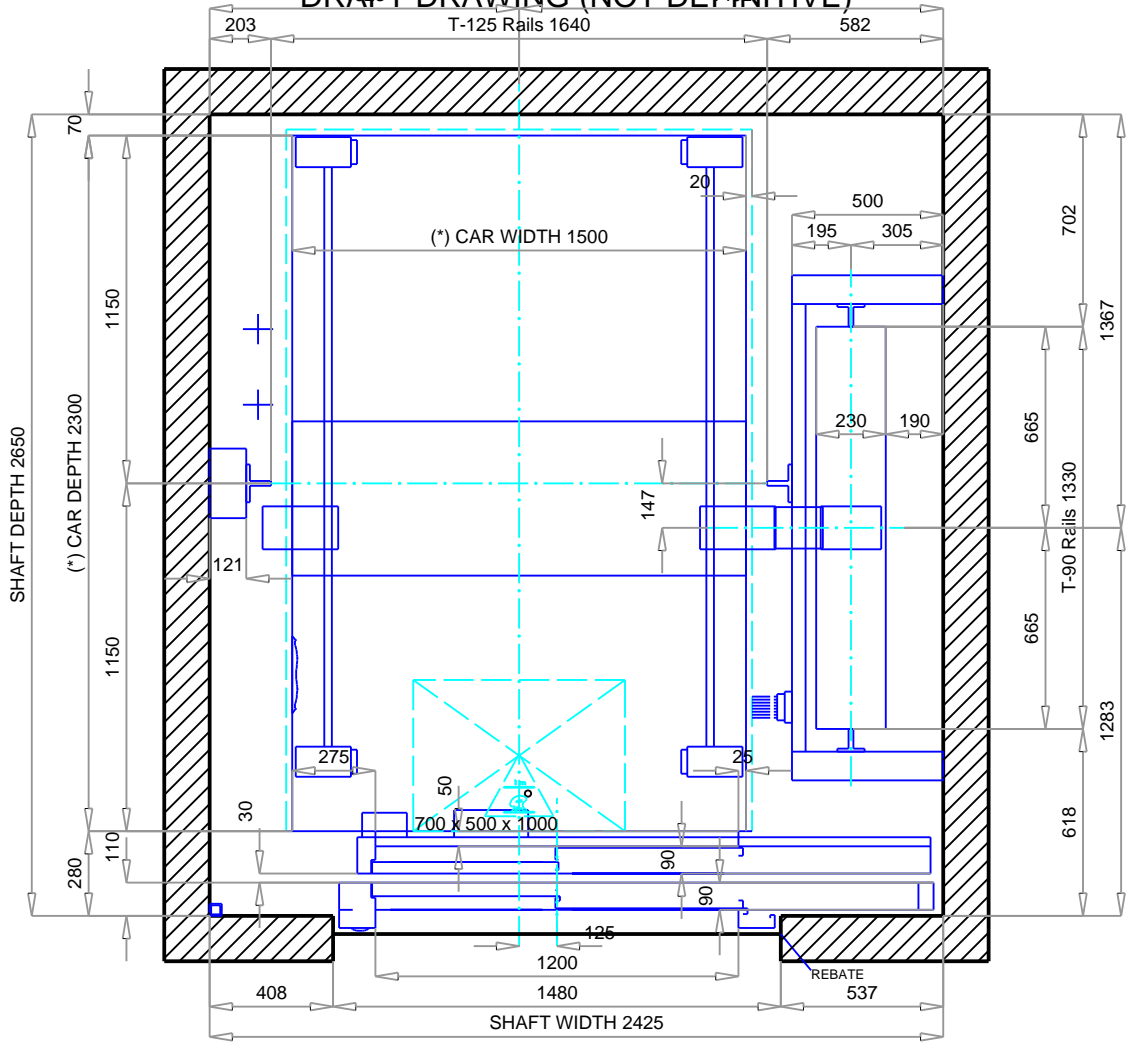
UNIT mm

PAGE 5/9

REF.

1059024

DRAFT DRAWING (NOT DEFINITIVE)



Doors on level

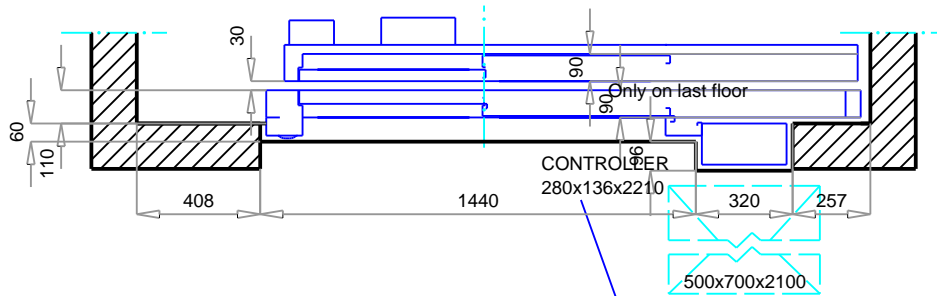
SHAFT PLAN

Scale 1:25

Headroom requirement for a solution compliant with EN81-20/50 with:

Max Shaft Depth = 2984 mm

Doors on level 2

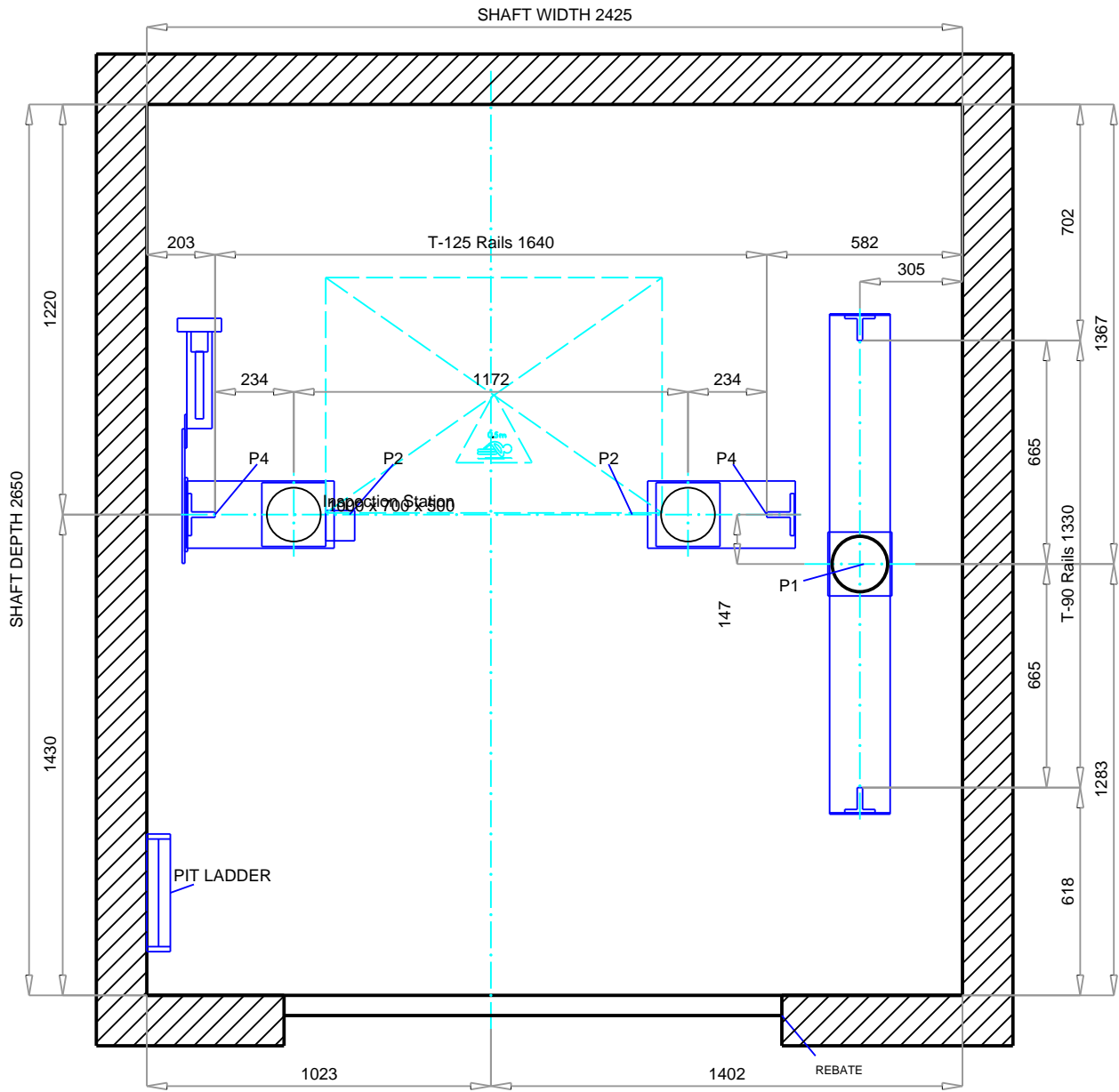


(*) Car dimensions according to EN81-70

REBATE

CUSTOMER	Typical Drawing		
ADDRESS	Typical Drawing		
CITY	.		
DRAWN	30/07/2020 EXCD00001	SCALE	DRAWING N°
CHECKED		UNIT mm	PAGE 6/9
			REF. 1059024

DRAFT DRAWING (NOT DEFINITIVE)



PLAN ON PIT

Scale 1:20

CUSTOMER Typical Drawing
 ADDRESS Typical Drawing
 CITY .

DRAWN 30/07/2020
 EXCD00001

SCALE

DRAWING N°

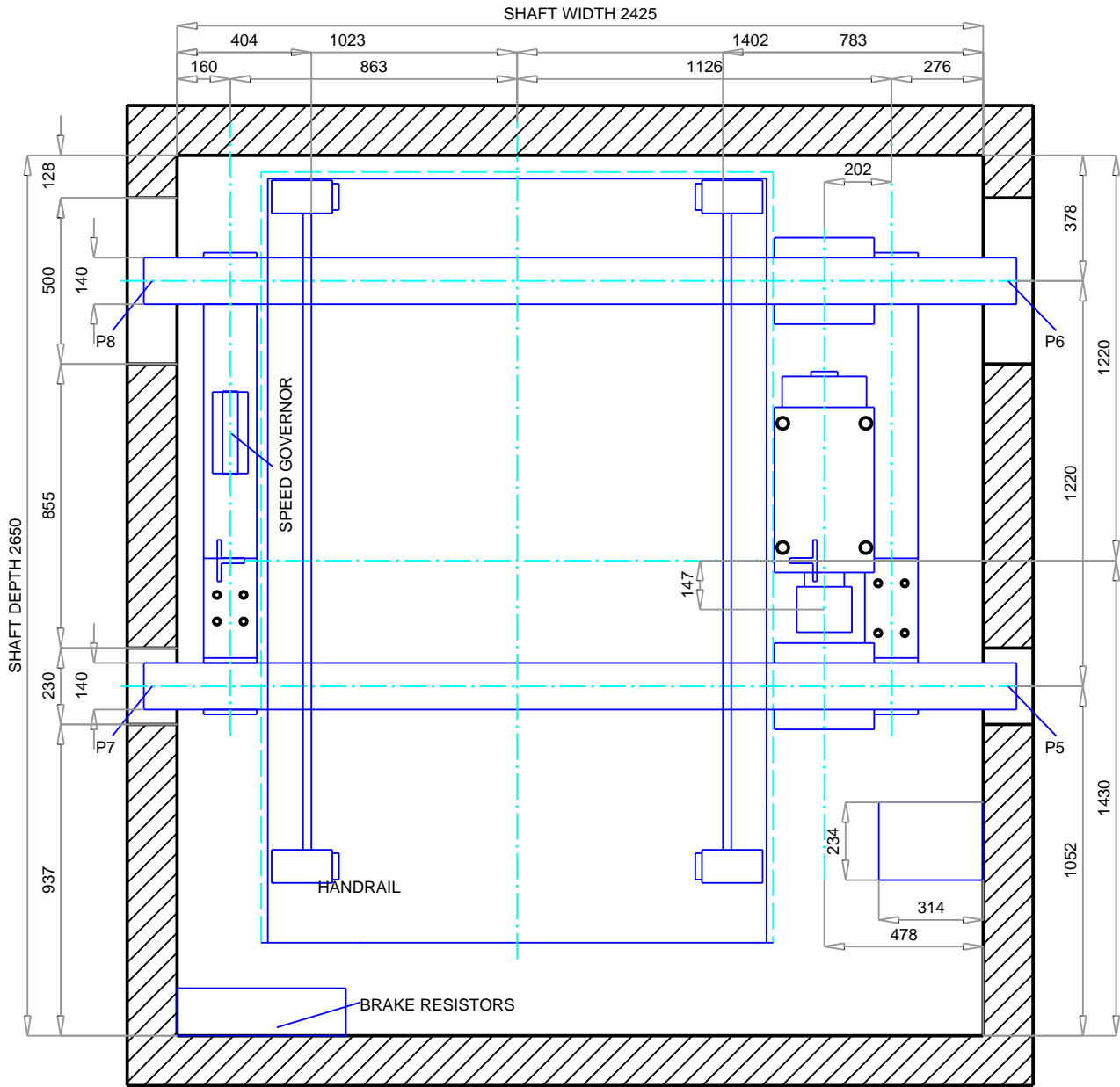
CHECKED

UNIT mm

PAGE 7/9

REF. 1059024

DRAFT DRAWING (NOT DEFINITIVE)

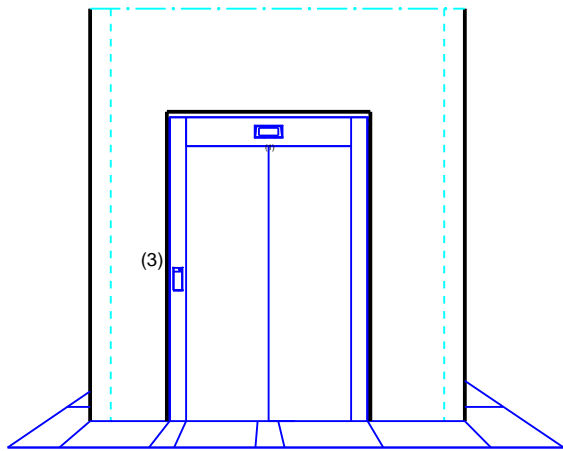


MACHINE VIEW

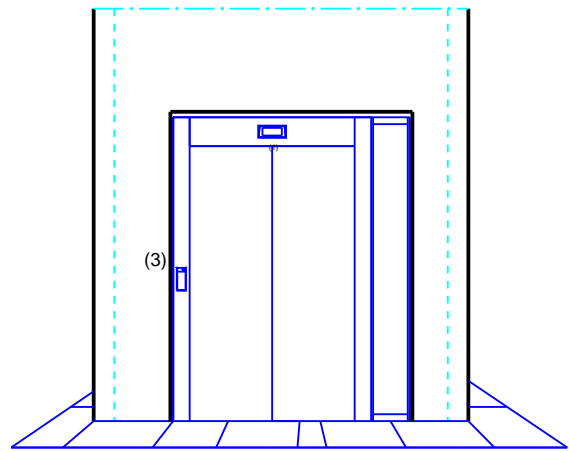
Scale 1:20

CUSTOMER	Typical Drawing			
ADDRESS	Typical Drawing			
CITY	.			
	DRAWN	30/07/2020 EXCD00001	SCALE	DRAWING N°
	CHECKED		UNIT mm	PAGE 8/9
				REF. 1059024

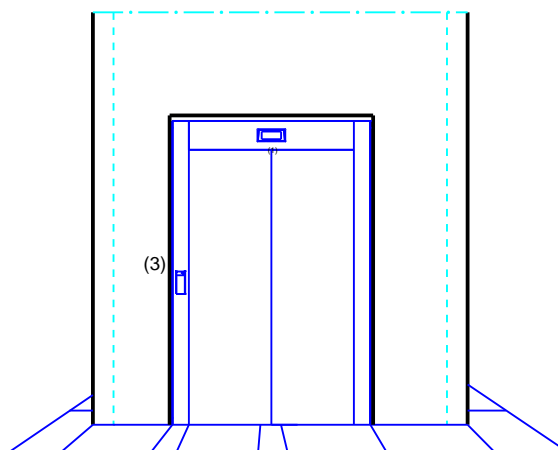
DRAFT DRAWING (NOT DEFINITIVE)



Doors on level 1



Doors on level 2



Doors on level 0

- (1) Indicator
- (3) LOP

CUSTOMER		Typical Drawing		REF. 1059024
ADDRESS		Typical Drawing		
CITY		.		
	DRAWN	30/07/2020 EXCD00001	SCALE	DRAWING N°
	CHECKED		UNIT mm	PAGE 9/9